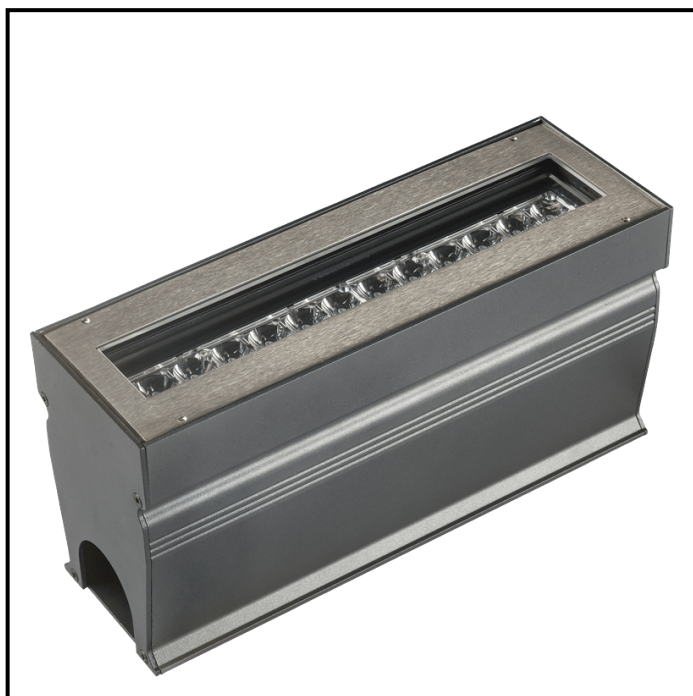
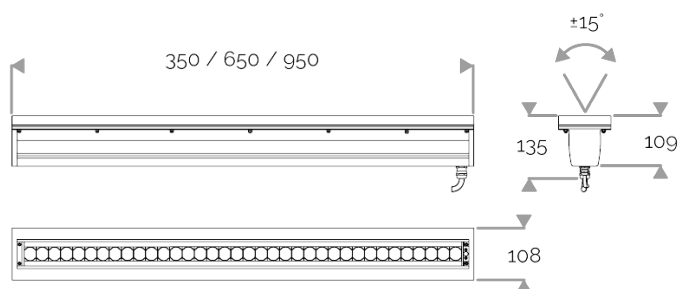


**X-LINE UP<sup>2</sup> - Clear glass**

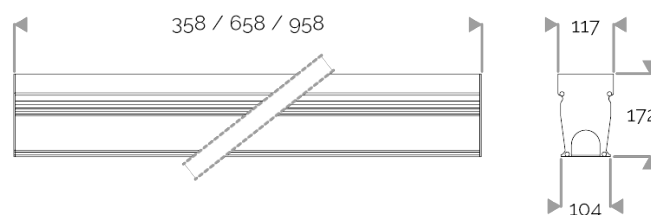
822-2050 X-LINE UP<sup>2</sup> 24 230V warm white 2700K 2x22.5° L650mm 24W IP67



Light fixture



Blockout



## X-LINE UP<sup>2</sup> - Clear glass

822-2050 X-LINE UP<sup>2</sup> 24 230V warm white 2700K 2x22.5° L650mm 24W IP67

### APPLICATION

Inground luminaire (not suitable for walls and roads), adjustable LED for outdoor lighting or architectural lighting. This product requires good drainage.  
Accentuation, wallwasher and marker light.



### LIGHTING FEATURES

CRI70. High-power LED luminaire. Monochrome version, RGB MIX or WHITE MIX.



### ELECTRICAL FEATURES

230V mains connection. Integrated driver. Built-in 10 kV/5 kA surge protection. Control to be specified when ordering. Default cable length 1.5m. DMX version contains the plug and socket CONNECT SYSTEM for easy installation.

**Lifetime: 60 000 hours L80 B10**

### MECHANICAL FEATURES

IP67, IK10. 304 stainless steel frame. Body in painted aluminium. Glass (thickness 19 mm) clear. Adjustable clear glass version can be tilted +/- 15°. Supplied with blackout (thickness 5 mm) in Surtec 650 treated and painted aluminium.  
Weights: 350mm : 5,8 kg. 650mm : 10,3 kg. 950mm : 15 kg.

### LUMEN DATA

|   |      |
|---|------|
| Lumen nominal total warm white 2700K (lm) | 2328 |
| lm/W LED warm white 2700K                 | 96   |
| lm/W product warm white 2700K             | 68,5 |
| Qty LED                                   | 24   |
| Ta max.                                   | 30°C |
| Tj (at 25°C)                              | 85°C |

### INRUSH CURRENT

|                          |     |
|--------------------------|-----|
| Inrush Current (A)       | 60  |
| Inrush Current Time (µs) | 210 |

### POWER

|                       |      |
|-----------------------|------|
| Product Led Power (W) | 24,2 |
| Product Power (W)     | 34   |

### WARRANTY

5-year warranty: on LED module and driver (see the FLUX conditions).

