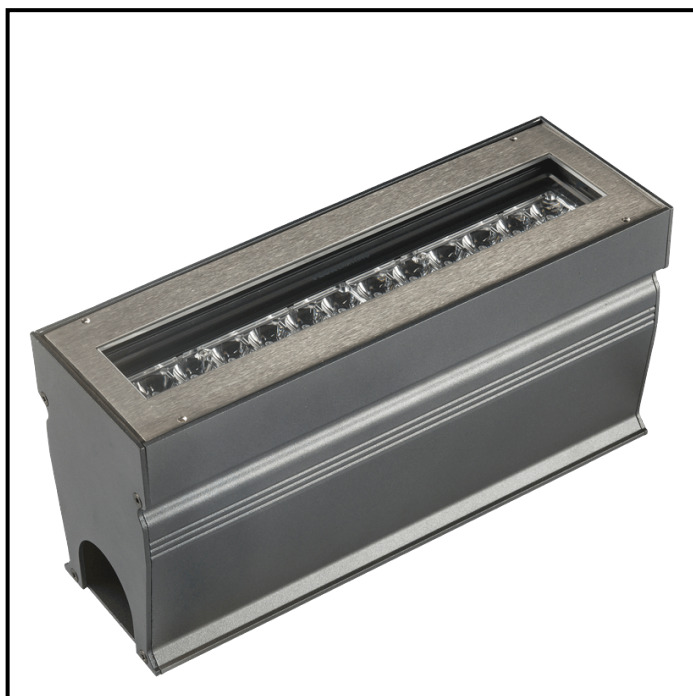
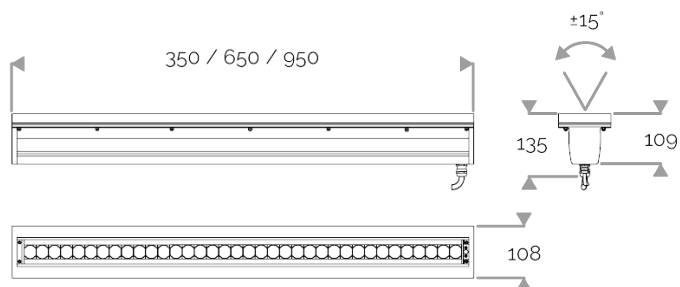


X-LINE UP² - Clear glass

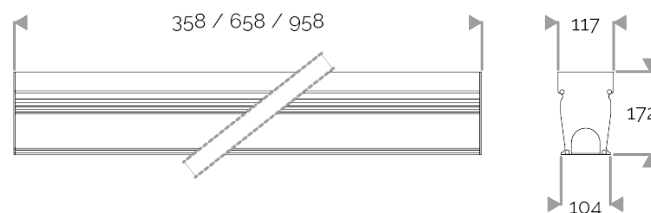
822-2445 X-LINE UP² 36 230V red 50x10° L950mm 27W IP67



Light fixture



Blockout



X-LINE UP² - Clear glass

822-2445 X-LINE UP² 36 230V red 50x10° L950mm 27W IP67

APPLICATION

Inground luminaire (not suitable for walls and roads), adjustable LED for outdoor lighting or architectural lighting. This product requires good drainage.
Accentuation, wallwasher and marker light.

LIGHTING FEATURES

CRI70. High-power LED luminaire. Monochrome version, RGB MIX or WHITE MIX.

ELECTRICAL FEATURES

230V mains connection. Integrated driver. Built-in 10 kV/5 kA surge protection. Control to be specified when ordering. Default cable length 1.5m. DMX version contains the plug and socket CONNECT SYSTEM for easy installation.

MECHANICAL FEATURES

IP67, IK10. 304 stainless steel frame. Body in painted aluminium. Glass (thickness 19 mm) clear. Adjustable clear glass version can be tilted +/- 15°. Supplied with blackout (thickness 5 mm) in Surtec 650 treated and painted aluminium.
Weights: 350mm : 5,8 kg. 650mm : 10,3 kg. 950mm : 15 kg.

WARRANTY

5-year warranty: on LED module and driver (see the FLUX conditions).



Lifetime: 60 000 hours L80 B10

LUMEN DATA

Lumen nominal total red (lm)	1688,4
lm/W LED red	64,2
lm/W product red	44,1
Qty LED	36
Ta max.	30°C
Tj (at 25°C)	85°C

INRUSH CURRENT

Inrush Current (A)	60
Inrush Current Time (µs)	210

POWER

Product Led Power (W)	26,3
Product Power (W)	38,3

